



Welcome to
Sandhill Primary
School
Foundation Stage
2



2023 / 2024

Contents page

- Welcome
- Meet the team
- Early Years Foundation Stage
- Foundation Stage 2 School Day
- School Information
- Health Safety and Welfare

Welcome

We would like to offer you a warm welcome to our Sandhill Early Years Foundation Stage 2. As Early Years practitioners we understand that starting full time school is a very important change in yours and your child's life, and we strive to make this an exciting and happy time, whether your child is new to Sandhill or has enjoyed being part of our Foundation Stage 1.

The Early Years Team are eager and excited to meet our full time children and any new faces, and we hope that your child/ren shares this same anticipation and enthusiasm to start school.

We can appreciate that this can be an emotional time for both parents/carers and children starting school. Hopefully, this booklet will help support you understand the day to day running of our Foundation Stage 2 and the wider school community. We hope to answer your questions and reassure you about our Early Years provision.

However, if you have any further questions please do not hesitate to ask.



In our Foundation Stage 2 we aim to be exceptional in all that we do. Not only do we have high expectation of all the children in our care, but of the adults supporting them. We are a friendly and supportive team, who are dedicated in developing and enthusing children to learn.

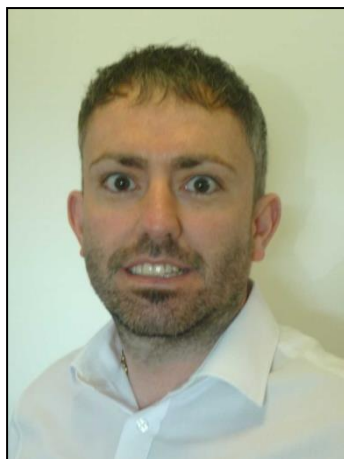
We strive to create a safe, welcoming and engaging learning environment where children become confident to try new activities and communicate with their peers and adults. We support and nurture children in their learning, we celebrate mistakes and praise resilience and children who 'have a go!' We foster an 'I can' attitude and take care to ensure children do not become static in their learning; however we understand the importance of practicing new skills.

The Early Years Team most importantly wants your child to be happy at school and our team are committed in supporting each and every child.

Meet the team

2023 / 2024

Headteacher – Mr Haywood



Parent Support Advisor – Miss Stoppard



SENCO – Miss McDonald



EYFS Team

EYFS lead , Class teacher FS2 - Mrs Manley



Class Teacher FS1 – Mrs Larkin



EYFS Teaching Assistant- Miss Hinkles



EYFS Teaching Assistant- Mrs Swift



EYFS Teaching Assistant- Mrs Matthewman



Early Years Foundation Stage

The Early Years Foundation Stage (EYFS) is the stage of education for children which begins at birth and lasts until the end of the school year in which they become five. This includes Nursery (FS1 -3 and 4 year olds) and Upper Foundation (FS2- 4 and 5 year olds). This stage of the curriculum is based on the fact that children learn best through play and active learning.

This is a very important stage as it helps your child get ready for school as well as preparing them for their future learning success. It should also support their social development, care and learning needs. From when your child is born up until the age of 5, their early years experiences should be happy, active, exciting, fun and secure.

During their time in the Foundation Stage your child will be learning new skills, knowledge and understanding through 7 areas of development. These are divided into 3 'prime areas' and 4 'specific areas'.

The 3 prime areas are of the utmost importance in the beginning and are as follows:

- ✓ **Communication and Language**
- ✓ **Personal, Social and Emotional Development**
- ✓ **Physical Development**

As children grow, these 3 prime areas will help them to develop skills in the 4 specific areas. These are:

- ✓ **Literacy**
- ✓ **Mathematical development**
- ✓ **Understanding the World**
- ✓ **Expressive Arts and Design**



Children's knowledge, skills and understanding within each area of the curriculum will be developed through a combination of teacher-led learning, supported and guided group time, play-based learning, and time to develop their knowledge and skills independently. Adults in the EYFS will support and scaffold pupils learning to enable them to reach their full potential. To complement adult led learning, there will be a wide range of opportunities for children to develop and progress independently through play-based learning known as 'Areas of Continuous Provision' or 'Free Flow Learning'. On a daily basis children will experience a balance between adult led/group focused learning and independent or supported Free Flow Learning.

Outdoor learning is a very important part of the EYFS curriculum. Our children have access to their own outdoor play areas throughout the year and outdoor learning is well structured, resourced and organised to support all areas of learning.

The Nursery and Reception classrooms are divided into areas which provide well organised and challenging activities. These are appropriate to different ages and levels of development and can be adult or child initiated. All of your child's learning is carefully planned so that their individual needs are met and that their learning is exciting and enjoyable. We will monitor and assess your child's progress and achievements in all areas of learning through observation, discussion, or direct teaching on a daily basis. We value any contribution that you would like to make to your child's learning. Look out for our 'WOW' Board in our cloakroom where you can share some of your child's achievements with us.

Foundation Stage 2 (FS2)

School Day

Session Procedures

The Early Years Foundation Stage team place a great emphasis on home-school links. We invite parents to settle their children at the start of the school day, however we do encourage children to become independent once they have settled into their new learning environment. We actively seek to engage parents and carers in their child's learning through informal chats, curriculum leaflets, and updated Early Years notice boards in the cloakroom.

The Early Years Team will do their utmost to discuss any concerns or issues before or after the school day, however if this is not possible you can make an appointment with the Early Years Foundation Stage team directly or through the main reception staff.

Opportunities for more formal open evenings are scheduled in both the Autumn and Spring terms. During these meetings the class teachers will discuss your child's progress, achievements and next steps in their learning.

Home time Procedures

At the end of the school day children in the Early Years Foundation Stage leave via the cloakroom area onto the playground. The children follow a home time routine that may include a story or singing. One adult will supervise the exit door to the FS2 Outdoor Area. The adult on door duty is responsible for calling your child's name. We ask parents to form a queue at the door and we appreciate that space is limited. In the case of bad weather we aim to open the door as soon as possible to reduce your waiting time.

Personal Passwords

To ensure the safety of your child we ask all parents to fill in the form that outlines which adults are permitted to collect your child.

This is then recorded on the school system. If you are unable to collect your child from school, we ask that you contact school and leave a message to say which adult will be collecting your child. We also ask if the adult could use the personal password when collecting your child. The Early Years Staff have a duty of care and will not allow children to leave with adults we are not familiar with.

The Foundation Stage 2 Day

A typical Foundation Stage 2 day follows a similar routine each day of the week. Children are encouraged to enjoy their milk and fruit independently during the day, in a small group with their friends. A usual day looks like this:

8:45 am	Children enter the classroom, they select their name card and choose in an area of provision before sitting on the carpet ready for register.
9:00-9.30	Children take part in group Read Write Inc activities
9.30 – 10.30	Children access free flow learning indoor and outdoor
10:30 – 10.45	Children join in with group maths focus time
10.45 – 1130	Children access free flow learning indoor and outdoor
11.30—11.35	Children take part in story time/ rhyme time
11:35– 11.45	Children prepare for lunch – going to the toilet and hand-washing
11.45 – 12.45pm	Lunch-children eat in the hall and access outdoor activities, supported by our lunch time supervisors
12.50– 1:20	Children complete registration and join in with Literacy / Topic focus.
1:20-2.40	Children access free flow learning indoor and outdoor
2.40-3:05	Children enjoy Fred talk games, story and singing
3.15pm	Home time

School Information

School Uniform

We require all children to wear school uniform. This is very important as it promotes a sense of 'belonging' to our school, and a pride in wearing our uniform.

The uniform provides sensible, appropriate clothing to wear in school. There are a wide range of items to choose from.

Parents should choose from;

- ✓ Red school sweatshirt/cardigan with school logo.
- ✓ Red or white polo shirt.
- ✓ Grey school trousers.
- ✓ Grey shorts (warm weather)
- ✓ Red/white checked dress.
- ✓ Grey tights.
- ✓ Black school shoes.



It is essential for health and safety reasons that children wear sensible, comfortable shoes for school. Please do not send children in flip flops or sandals in the Summer, they are not suitable for activities in school.

Physical Education

All children in FS2 will be involved in PE each week (please see the FS2 noticeboard for PE days).

All children will require an indoor PE kit as well as suitable trainers or pumps.

PE kit consists of:

- ✓ suitable trainers or pumps
- ✓ white t-shirt
- ✓ black shorts

Please ensure that your child's name is in all items of clothing.



Personal Information

Parents/Carers are asked to complete an information sheet that includes addresses, telephone numbers etc. It is vital that this information is accurate, as it is updated on our electronic system so that school can efficiently contact you if your child is ill or if school staff need to discuss other matters, such as after school clubs, school trips etc. We also ask parents to inform the school office or a member of the Early Years Team if these contact details change.

School Dinners

School meals are provided free of charge. Our menu is given out at the beginning of each half term and is also on our Noticeboard.

Children can choose a main meal, vegetarian option or a jacket potato. Salads and home-made bread are provided each day and a selection of hot and cold desserts are also available. Meals are cooked on site in our kitchen, providing nutritional, healthy meals fresh each day. These are served to the children from 12:00.p.m by our experienced team of canteen staff. If for any reason, (religious or medical) your child requires a special diet, please inform us in writing.

Children may bring a packed lunch from home although this should not include sweets. All containers should be clearly marked with your child's name. Uneaten food from packed lunches will be returned to enable parents to monitor consumption. Water is available for all children on the tables at lunchtime.



Milk

School milk is available to all children in the Early Years Foundation Stage, until the term they turn 5 years old.

Snack Time

All children in the Early Years Foundation Stage receive free school fruit and this is available on a free flow basis during the day.

Transition to FS2

For the majority of children that have attended our FS1 setting, transition to FS2 is a natural progression. Children are familiar with staff and will recognise how our FS1 and FS2 settings are similar. The biggest change is the lunch time routine. To ensure children become familiar with this exciting event-we invite you to stay for lunch and experience the routines together. You will receive a letter inviting you to lunch and sharing the menu choices for the day as part of your transition pack. All children under 7 are entitled to free school meals.

Children that have not attended our Nursery (FS1) setting are also invited into school to meet other children in their class and are also invited to stay for a school lunch.

To help us find out more about your child, please complete the one page profile in your pack so that we can make sure we have got something to interest them when they come and visit.

We hope the transition to Foundation Stage 2 will be smooth for you and your child. If you have any worries or concerns please have a chat to your child's class teacher who will do everything they can to help you.

Health Safety and Welfare

Accident Procedures

Despite every effort, care and concern, it is possible that your child may become ill whilst at school or have an accident. Minor accidents and illnesses are dealt with in school, incidents recorded and the child checked by a qualified First Aider. A note alerting you to an incident/injury will be handed to the class teacher and then to your child to bring home at the end of the school day. For more serious injuries/incidents emergency accident procedures are set into operation. In the case of an emergency we will endeavour to contact you as quickly as possible, however we will deal with the child's emergency in the first instance. Therefore, it is important that the school has up to date information with regards to your contact number.

Medicines at School

Medicines must be handed to the office and parents need to make sure the medication is prescribed by a doctor and labelled stating the child's name and dosage required. School can only administer medication that is prescribed and children should not bring over-the-counter medicines into school. We appreciate that some medicines like paracetamol and ibuprofen will not warrant a prescription, so these cases will be handled on a 'needs assessed' basis and a form will be required to be completed by an adult. Children on other long term, regular medication will need to have a special arrangement made to meet their individual need.

School Nurse

Medical checks are carried out by the School Nurse. When statutory health checks are undertaken by the school nursing team you will be notified and receive any relevant paper work or permission slips.

Safeguarding

Through our daily contact with pupils and direct work with parents, our staff have a crucial role to play in noticing indicators of possible abuse or neglect. Parents should be aware therefore, that where it appears to a member of staff that a child may have been abused, the school is required, as part of the local Child Protection procedures, to report their concerns to Social Services immediately.

All staff employed at Sandhill Primary School are kept up to date with Safeguarding training and undergo rigorous pre-employment checks

Our Safeguarding Team:

Mr Haywood, Miss Stoppard, Mrs Archer and Mrs Manley

Special Educational Needs and Disabilities

At Sandhill Primary School, we recognise that some children may have barriers to their learning or have disabilities that school need to make adjustments for. These difficulties may be long or short term. If your child is identified as having Special Educational Needs and/or a disability, you will be invited into school to discuss our concerns and the wider range of support that is available. Furthermore, you will also be invited into school at regular intervals to discuss your child's progress and any concerns and questions you may have with the school SEN / Inclusion Lead.

Final Comment

All of the team at Sandhill Primary School hope you have found the information in the prospectus both useful and interesting. If you would like to know more, or have suggestions for further items you would like to see included, we will be more than pleased to try and help. At the time of publication, the information contained in this prospectus is accurate, but it may be subject to change in the future.